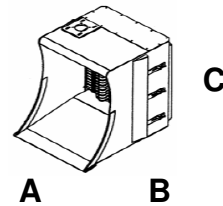


REMU WL 160 HD

PICTURE WILL COME SHORTLY

Dimensions

- A** Width 204 cm
- B** Depth 145 cm
- C** Height 140 cm



Weight

2400 kg

For wheel loaders	7 – 12 tn
Hydr.flow recommendation	150 – 200 l/min
Volume ISO/SAE	1,8/2,1 m ³
Screening area	1,4 m ²
Hydr. power continous/ peak	50/70 kW
Number of axles	3
Blade thickness and material	16 mm Hardox 500
Standard blade spacings	25 mm (grain size 0-20 mm) 34 mm (grain size 0-29 mm) 50 mm (grain size 0-45 mm)

Working pressure 120 – 160 bar, max. pressure 310 bar.

Main applications: topsoil screening, producing quality soil and mixed materials, pipe back filling, screening demolition worksite waste materials, wood chip screening (and crushing) recycling materials, composting, aerating biomaterials, screening stones, soil, glass, metals, peat, bark, clay, bio waste, demolition waste

- By attaching WL 160HD bucket to a wheel loader you get a suitable unit to work on a hard surface, like gravel, concrete or tarmac.
- Extremely wear resistant, the blades are thicker than in standard Remu models.
- The unique blade design eliminates clogging and makes the best result even in wet conditions when other methods have to stop.
- Loading and screening can be done simultaneously with one machine.
- Excellent solution for screening compost when large amounts are to be moved around from one place to another.
- Remu range includes buckets for 5-30 ton excavators, 2-20 ton wheel loaders, skid-steer/loaders and tractors