

REMU

Machinery Evolution



News 2011



The past two years have been full of challenges, growth and success

In this magazine we have gathered the newest products and projects we have been working with and which we can now introduce the first concrete results.

Even if the last years have been occupied with big changes like change of generation and preparations for the investment for our new production facilities, we haven't forgotten the active development of our basic business. As REMU is known for its innovations in technique and understanding for customer needs, also these new models are developed

thinking the best of customer and their opportunities to make profitable business.

New product has got the model name **Evolution**. Evolution is about arise of such a features that promote survival and thus adapting to changing environment. New Evolution models offers to the customer group of features that improve the usability and make the REMU product to be ones again stronger than their competitors!



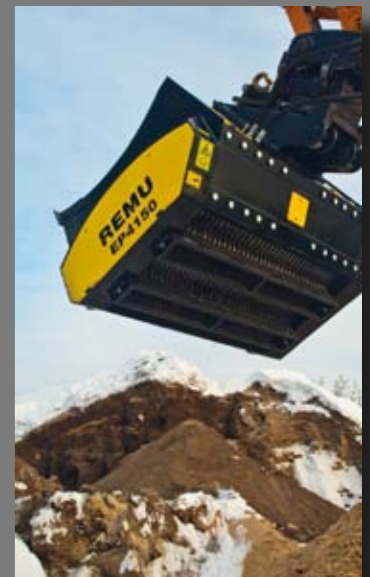
REMU Evolution Pro Screening Buckets

- Straighter sides so that even wet material will pass through smoothly for better performance
- Capacity up to 60 m³/h (100 y³/h)
- Several different options for blades to be choose according to application
- Also larger EX and WL buckets up to 6 m³ (10 y³) will have fresh design during this year

Better protected hydraulic motors and hoses

Bolt blade both excavators and wheel loaders

Two, three or four rotors



	Base machine		Hydraulic flow	Volume ISO / SAE	Screen area	Rotators	Measures			Weight	Blade Spacing		Particle Size					
	1.000 kg / 1.000 lbs						l / min	m ³ / yd ³	m ² / ft ²		l	b	h	kg	mm		inches	
	Excavator	Wheel loader													g / min	mm	inches	mm
EP2095	5 - 8	1 - 3	50 - 100	0,45 / 0,5	0,4	2	105	135	100	696	15	3/8	8	3/8-				
	11 - 18	2 - 7	13 - 26	0,6 / 0,7	5,4	2	41	53	39	1530	20	3/4	12	3/4				
EP3095	9 - 12	3 - 5	50 - 100	0,5 / 0,6	0,6	3	107	135	119	758	27	1	20	3/4				
	20 - 26	7 - 11	13 - 26	0,8 / 0,9	7,5	3	42	53	47	1670	34	1 3/8	25	1				
EP2150	7 - 10	2 - 4	50 - 100	0,6 / 0,6	0,7	2	105	190	100	942	48	1 7/8	40	1 1/2				
	15 - 22	4 - 9	13 - 26	0,9 / 1,0	8,6	2	41	75	39	2080								
EP3150	10 - 14	5 - 7	60 - 100	0,8 / 0,9	1,0	3	107	190	119	1100								
	22 - 31	11 - 15	16 - 26	1,2 / 1,4	11,8	3	42	75	47	2430								
EP4150	15 - 20	6 - 8	80 - 140	0,9 / 1,1	1,2	4	110	190	139	1350								
	33 - 44	13 - 18	21 - 37	1,5 / 1,7	14,5	4	43	75	55	2980								

REMU Combi Evolution 300

- Power source; integrated four cylinder diesel motor
- Screening element made of abrasion resistant steel
- Smallest particle size 0-10 mm (-3/8") and largest 0-100mm (-4")
- REMU screening technology
- Process all materials from top soil to scrap metal
- Automatic cleaning operation
- Works in all weather conditions
- Easy to change screening element
- Several remote control possibilities
- Available with the following platforms:
 - Trailer
 - Skid mounted
 - Tracked
- Instantly ready to use!



REMU Combi E 300 is a high production and towable screening plant



Technical data Combi E300					
Total height	2750 mm	9 ft	Screening element width	800 mm.	2 ft 7"
Total length	8320 mm	27 ft 3"	Screening element area	2,4 m ²	26 ft ²
Total width	2720 mm	8 ft 11"	Screening element rotators	17 Pcs.	
Wheel gauge	2340 mm	7 ft 8"	Fine conveyor width	800 mm.	2 ft 7"
Fine conveyor top end height	2330 mm	8"	Fine conveyor length	4850 mm	16 ft
Oversize material drop height	1600 mm	3 ft 3"	Feeder width	1000 mm	3 ft 3"
Screening element length	3000 mm	9 ft 10"	Feeder length	3000 mm	9 ft 10"
			Feeder volume	3 m ³	4 yd ³
			Machine ground clearance	300 mm	1 ft

More value adding features

REMU Big Float is a new type of wetlander for extreme conditions and challenges.

It is totally floating and still it can be transported in fully operation condition. This is possible because the pontoon structure of the REMU Big Float can be hydraulically narrowed for transportation. It can be also driven onto the trailer on its tracks without any crane assistance. Unloading of these machines takes only 20 minutes after which those are instantly ready to use.

On its technical features it is more like standard excavators than other marsh excavators. Track system of REMU Big Float is very similar to standard excavators and it has been proven to endure in wearing conditions for years.

One machine – many possibilities

With extra pontoons and anchoring legs REMU Big Float can be operated in open water. Add propellers to move machines along the water ways from a job site to another. You can use a number of attachments on the top of the boom for removing vegetation, pile driving, dredging and many other applications.



Patented
EP 1727687, US 7,588,106



Additional equipment: extra pontoons with anchoring legs. If equipped with hydraulic propellers, the travel speed can be up to 6 knots.



Patented construction allows easy transportation. Pull the pontoons closer together and drive direct onto a low-boy.

REMU invest in a new manufacturing facility in Finland



The new facility will provide work premises for welding and sheet metal work for 50 persons. In addition the new office will be build adjacent to production facility providing enough space at least for 20 office workers. Area of the new plant will be 40 000 sqf (4000 m²). However, the 4 acres (1,7 ha) piece of land makes is possible to enlarge facility even further when needed.

Approximately 6 M\$ (5M€) production facility is the biggest investment in company's history.
"As company has been growing already for years,

it was time reorganize the production and the facilities. This new facility makes it possible to response increasing demand of our products and at same time we can rationalize logistical side of the business."

Accounting period ending at the last July showed the turnover of 10 M\$ (7,5 M€). Growth from the previous year was 12 %. 90 % of the company's turnover comes from export business. At the moment REMU has 43 employes and recruiting more.

REMU Oy

Ostolantie 4
63700 ÄHTÄRI
FINLAND

Tel: +358 20 7431 160
email: info@remu.fi

REMU USA Inc.

8 Hemlock St
Old Orchard Beach ME 04064
Maine, USA

Tel: +1 888 600 0018
email: usa@remu.fi

REMU Deutschland GmbH

Tel: +49 (0) 171 418 0862
email: deutschland@remu.fi

REMU Norge AS.

Tel: +47 94 13 13 80
Email: norge@remu.fi